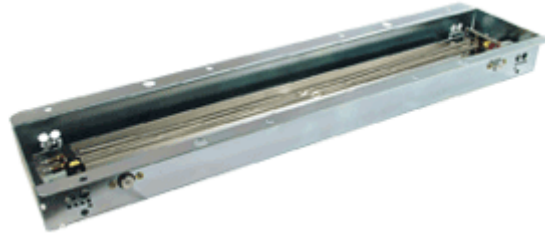


Part Numbering Specifications for Type 1 and Type 4



Digit #1 - Reverb Type

4 for Type 4

16.75" length x 4.735" width x 1.313" height.
42,5 cm length x 12 cm width x 3,3 cm height

Digit #2 - Input Impedance

A = 8 ohm

B = 150 ohm

C = 200 ohm

D = 250 ohm

E = 600 ohm

F = 1475 ohm

Digit #3 - Output Impedance

A = 500 Ohm

B = 2250 Ohm

C = 10000 Ohm

Digit #4 - Decay Time

1 = Short (1.2 to 2.0 sec)

2 = Medium (1.75 to 3.0 sec)

3 = Long (2.75 to to 4.0 sec)

Digit #5 - Connectors

A= Input Grounded/Output Grounded

B= Input Grounded/Output Insulated

C= Input Insulated/Output Grounded

D= Input Insulated/Output Insulated

E= No Outer Channel

Digit #6 - Locking Devices

1 - No Lock

Digit #7 - Mounting Plane

A= Horizontal Open Side Up

B= Horizontal Open Side Down

C= Vertical Connectors Up

D= Vertical Connectors Down

E= On End Input Up

F = On End Output Up